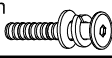
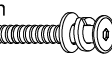


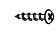


ASSEMBLY INSTRUCTIONS

MODEL : C1-RC101S- -W

IMPORTANT NOTE :

- * PLACE ALL WOODEN PARTS ON A CLEAN AND SMOOTH SURFACE SUCH AS A RUG OR CARPET TO AVOID THE PARTS FROM BEING SCRATCHED.
- * BEFORE YOU BEGIN, KINDLY FOLLOW THE ASSEMBLY INSTRUCTIONS STEP BY STEP.
- * DO NOT TIGHTEN ALL SCREWS UNTIL THE CHAIR IS FULLY SET-UP.

HARDWARE LIST			PART LIST			
A	JCBC M6 x 25mm + S/W M6 + F/W M6 x 13mm		4PCS	1	RIGHT SIDE FRAME	1PC
				2	LEFT SIDE FRAME	1PC
B	JCBC M6 x 45mm + S/W M6 + F/W M6 x 13mm		4PCS	3	FRONT STRETCHER (LONG)	1PC
				4	BACK STRETCHER (SHORT)	1PC
C	ALLEN KEY M4 (Ball Shape)		1PC	5	TOP REST	1PC
D	L BRACKET		4PCS	6	CUSHION SEAT	1PC
E	PH SCREW M4 x 12mm		8PCS			

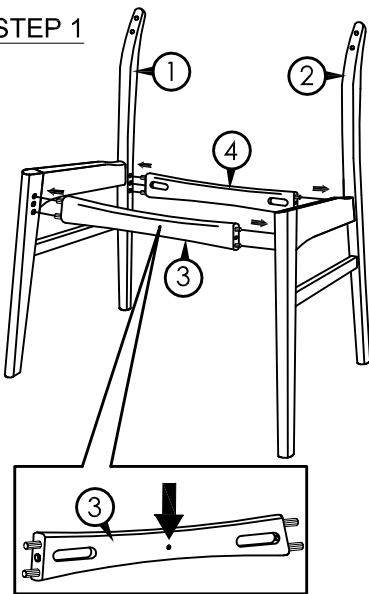
CAUTIONS :

(1) DO NOT FULLY-TIGHTEN THE NUT OR NUT BOLTS INITIALLY UNTIL ALL NUTS OR BOLT IS READY ASSEMBLED.

(TO AVOID CAUSING DAMAGES TO THE THREAD, DO NOT OVER-TIGHTEN THE NUTS OR BOLTS.)

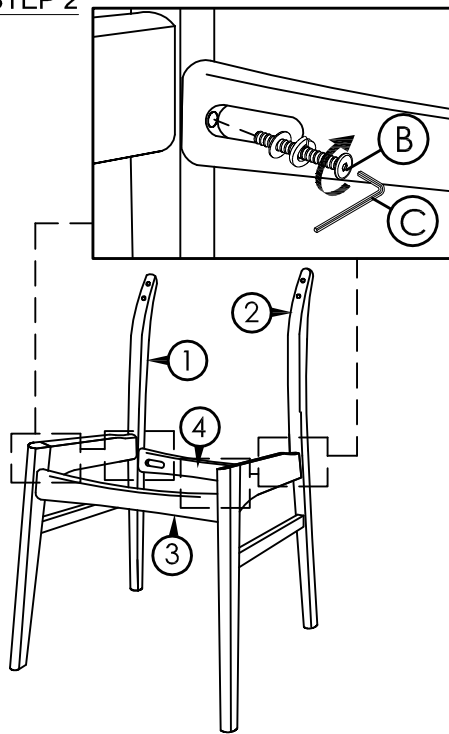
(2) KEEP ALL HARDWARE PART OUT OF REACH OF CHILDREN.

STEP 1

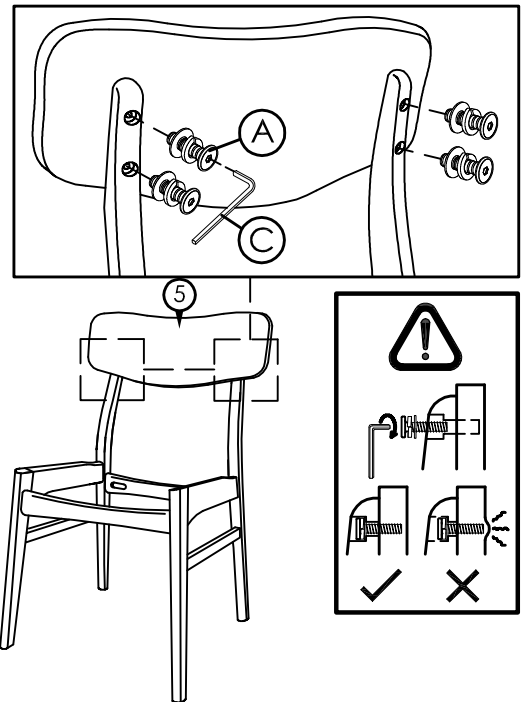


Front Stretcher has a small hole for identification.

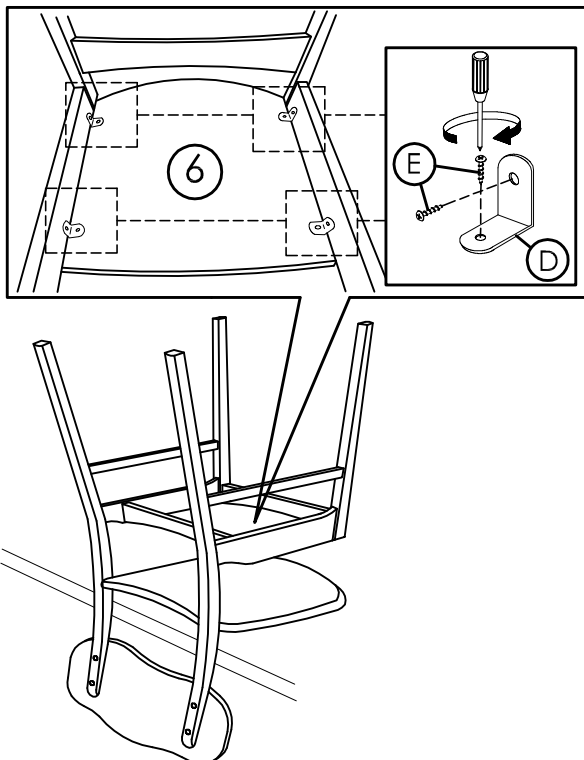
STEP 2



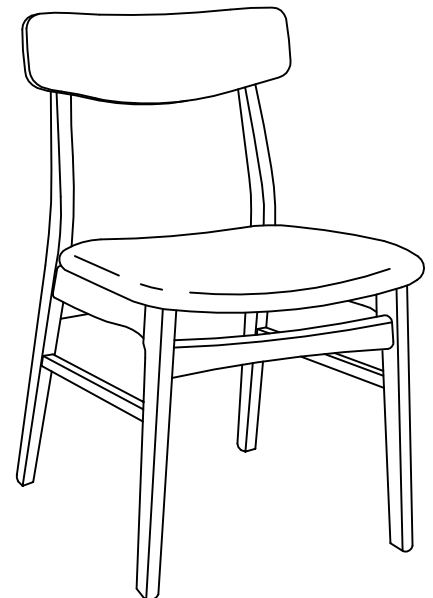
STEP 3



STEP 4



STEP 5



COMPLETED
CHAIR ASSEMBLY.