
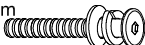

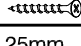



ASSEMBLY INSTRUCTIONS

MODEL : C1-RC102S- -O

IMPORTANT NOTE :

- * PLACE ALL WOODEN PARTS ON A CLEAN AND SMOOTH SURFACE SUCH AS A RUG OR CARPET TO AVOID THE PARTS FROM BEING SCRATCHED.
- * BEFORE YOU BEGIN, KINDLY FOLLOW THE ASSEMBLY INSTRUCTIONS STEP BY STEP.
- * DO NOT TIGHTEN ALL SCREWS UNTIL THE CHAIR IS FULLY SET-UP.

HARDWARE LIST				PART LIST		
A	JCBC M6 x 25mm + S/W M6 + F/W M6 x 13mm		4PCS	1	SIDE FRAME RIGHT	1PC
				2	SIDE FRAME LEFT	1PC
B	JCBC M6 x 50mm + S/W M6 + F/W M6 x 13mm		4PCS	3	FRONT STRETCHER	1PC
C	ALLEN KEY M4 (Ball Shape)		1PC	4	BACK STRETCHER	1PC
D	FH SCREW #8 x 32mm		4PCS	5	TOP REST	1PC
E	WOOD DOWEL M8 x 25mm		2PCS	6	CUSHION SEAT	1PC

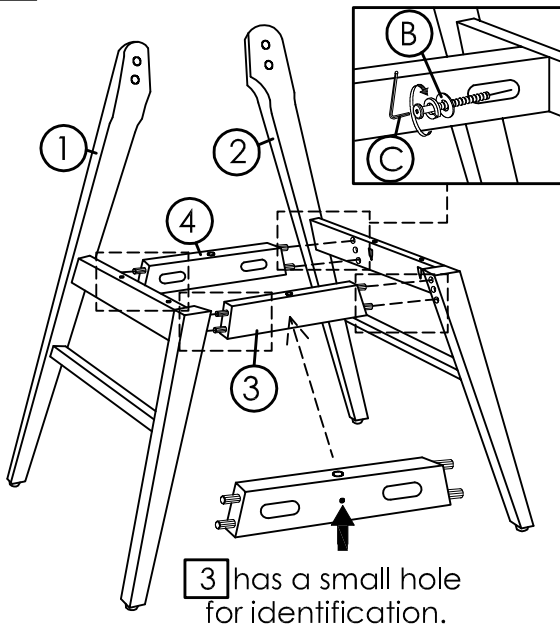
CAUTIONS :

(1) DO NOT FULLY-TIGHTEN THE NUT OR NUT BOLTS INITIALLY UNTIL ALL NUTS OR BOLT IS READY ASSEMBLED.

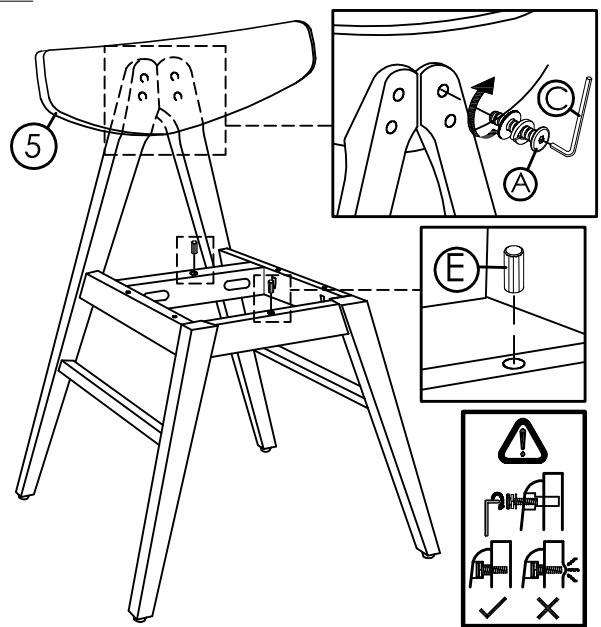
(TO AVOID CAUSING DAMAGES TO THE THREAD, DO NOT OVER-TIGHTEN THE NUTS OR BOLTS.)

(2) KEEP ALL HARDWARE PART OUT OF REACH OF CHILDREN.

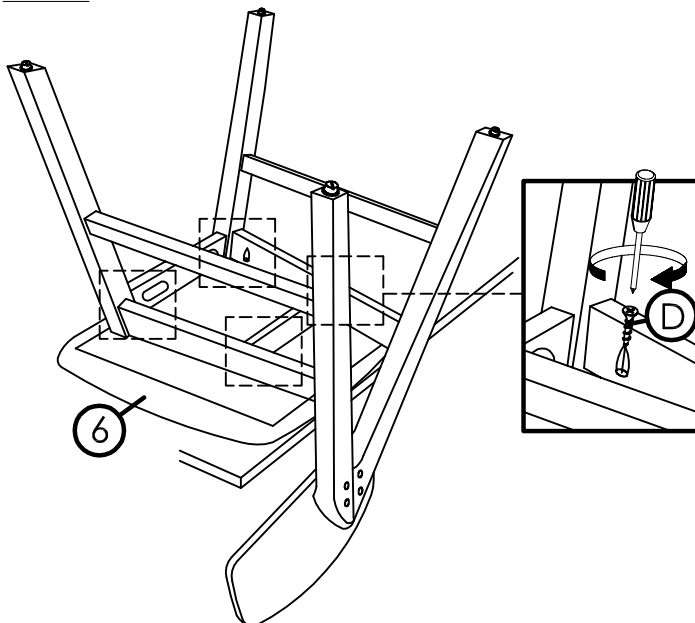
STEP 1



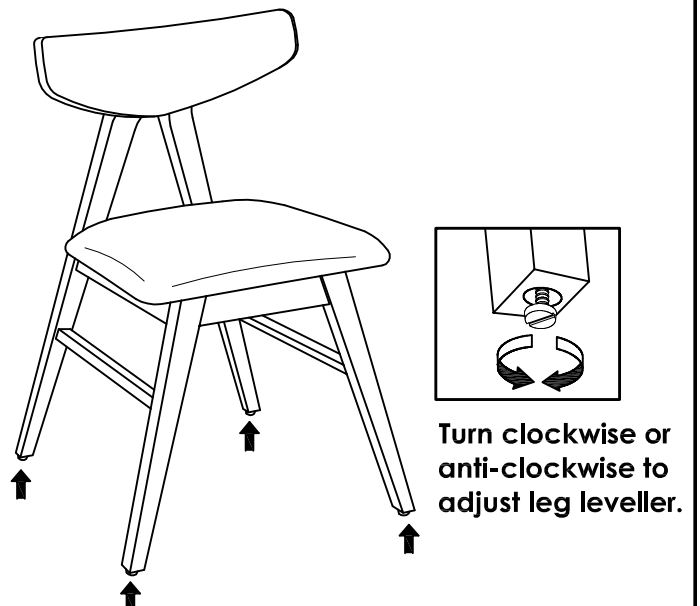
STEP 2



STEP 3



STEP 4



COMPLETED CHAIR ASSEMBLY.