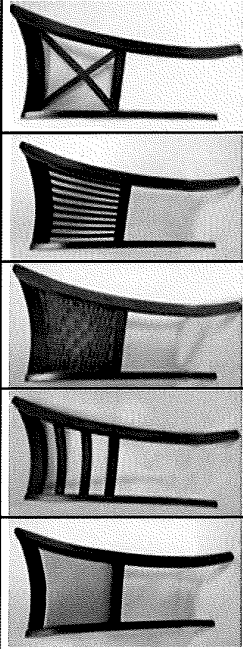


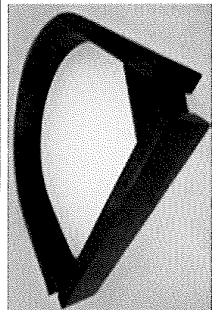
**ASSEMBLY INSTRUCTION.**

**MODEL: JOY CHAIR**



JOY-C JOY-H JOY-R JOY-V JOY-X

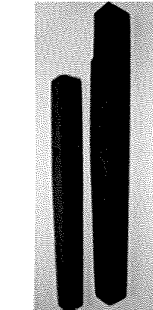
BACK PANEL: 1PC  
\*\* SUBJECT TO SELECTED MODELS \*\*



BOX SEAT: 1PC



LOWER FRAME: 1PC

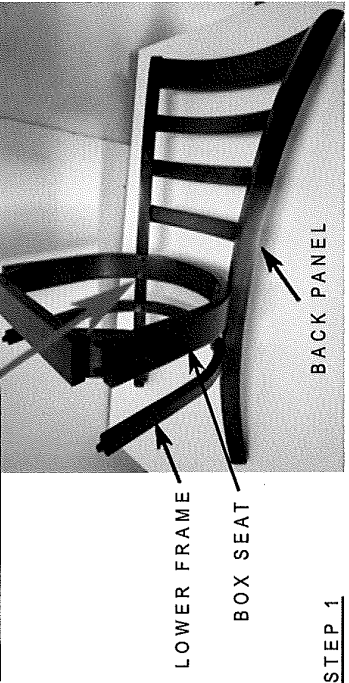
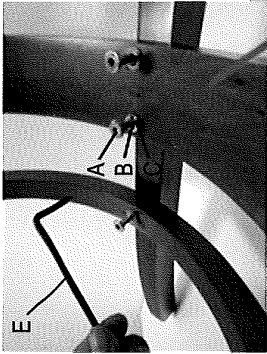


FRONT LEG: 2PCS CUSHION SEAT: 1PC

**HARDWARE.**

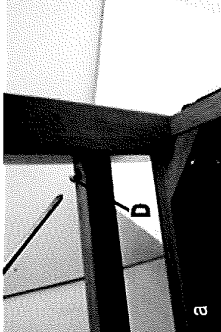
CODE	PART	DESCRIPTION	QTY
A		M6X45mm JCBC SCREW	10PCS
B		SPRING WASHER	10PCS
C		FLAT WASHER	10PCS
D		M4X32mm CHIPBOARD SCREW	6 PCS
E		M4 ALLEN KEY	1 PC

NOTE: HARDWARE AND PART LIST SHOWN IS PER/PC CHAIR

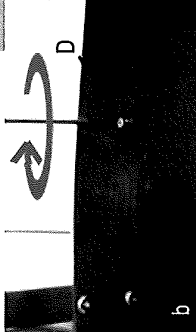


**STEP 1**

-SCREW ON THE BOX SEAT AND LOWER FRAME TO BACK PANEL WITH M6X45mm JCBC SCREW, SPRING WASHER AND FLAT WASHER. (X6).

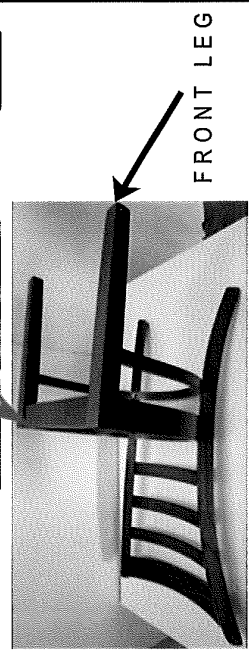
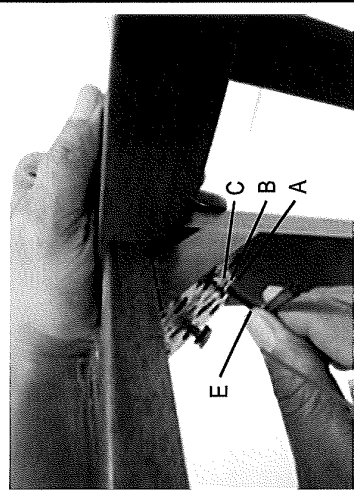


**ROTATE CLOCK WISE**



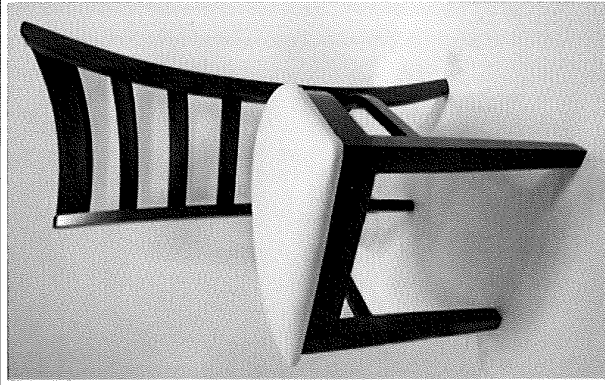
**STEP 3**

a) SCREW ON THE LOWER FRAME WITH M4X32mm CHIPBOARD SCREW. (X2)  
b) PUT THE CUSHION SEAT ONTO TABLE THEN TURN AROUND THE CHAIR AND SCREW ON WITH M4X32mm CHIPBOARD SCREW TO THE CUSHION SEAT. (X4)  
**(SCREWDRIVER REQUIRED).**



**STEP 2**

-FOLLOWING BY TIGHTENING THE FRONT LEG WITH M6X45mm JCBC SCREW, SPRING WASHER AND FLAT WASHER. (X4)



**COMPLETED ASSEMBLY.**



M8 M10

CM-BM104S