

# ASSEMBLY INSTRUCTIONS

## MODEL : C1-RC101S- -O

**IMPORTANT NOTE :**

- \* PLACE ALL WOODEN PARTS ON A CLEAN AND SMOOTH SURFACE SUCH AS A RUG OR CARPET TO AVOID THE PARTS FROM BEING SCRATCHED.
- \* BEFORE YOU BEGIN, KINDLY FOLLOW THE ASSEMBLY INSTRUCTIONS STEP BY STEP.
- \* DO NOT TIGHTEN ALL SCREWS UNTIL THE CHAIR IS FULLY SET-UP.

HARDWARE LIST			PART LIST		
A	JCBC M6 x 25mm + S/W M6 + F/W M6 x 13mm	4PCS	1	RIGHT SIDE FRAME	1PC
B	JCBC M6 x 45mm + S/W M6 + F/W M6 x 13mm	4PCS	2	LEFT SIDE FRAME	1PC
C	ALLEN KEY M4 (Ball Shape)	1PC	3	FRONT STRETCHER (LONG)	1PC
D	L BRACKET	4PCS	4	BACK STRETCHER (SHORT)	1PC
E	PH SCREW M4 x 12mm	8PCS	5	TOP REST	1PC
			6	CUSHION SEAT	1PC

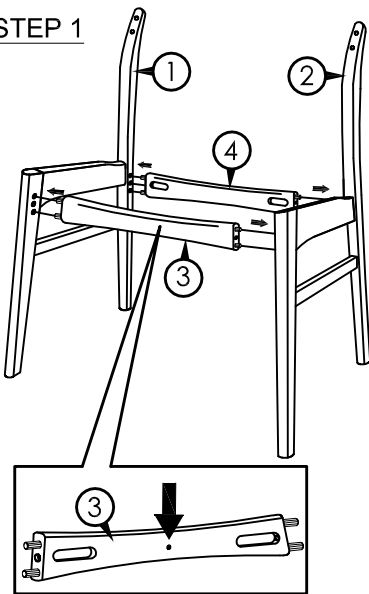
### CAUTIONS :

(1) **DO NOT FULLY-TIGHTEN THE NUT OR NUT BOLTS INITIALLY UNTIL ALL NUTS OR BOLT IS READY ASSEMBLED.**

(TO AVOID CAUSING DAMAGES TO THE THREAD, DO NOT OVER-TIGHTEN THE NUTS OR BOLTS.)

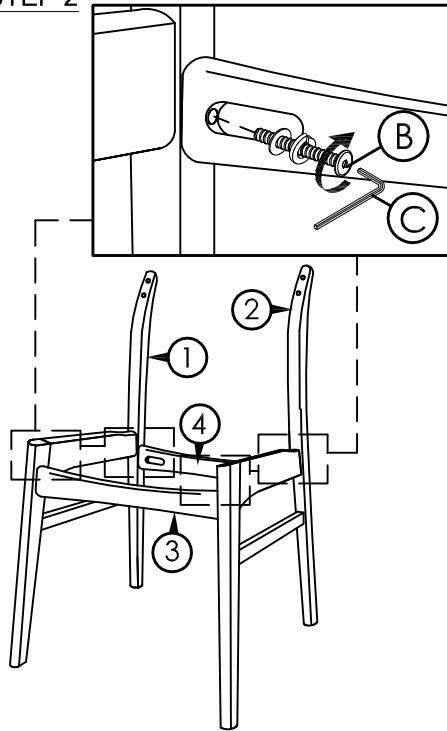
(2) **KEEP ALL HARDWARE PART OUT OF REACH OF CHILDREN.**

### STEP 1

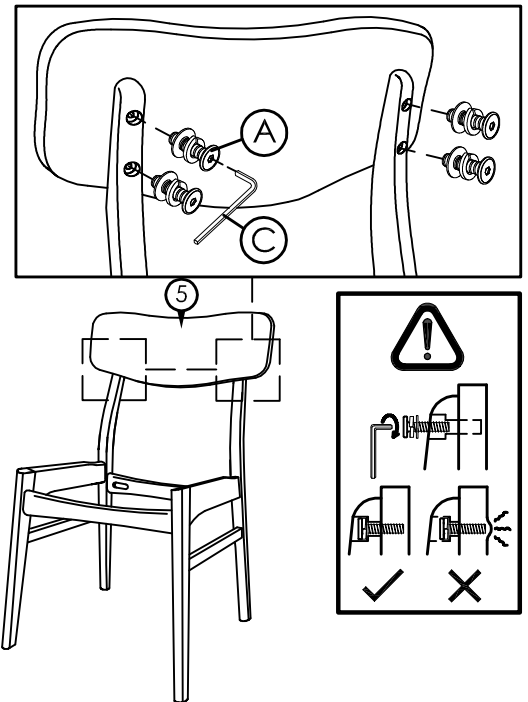


Front Stretcher has a small hole for identification.

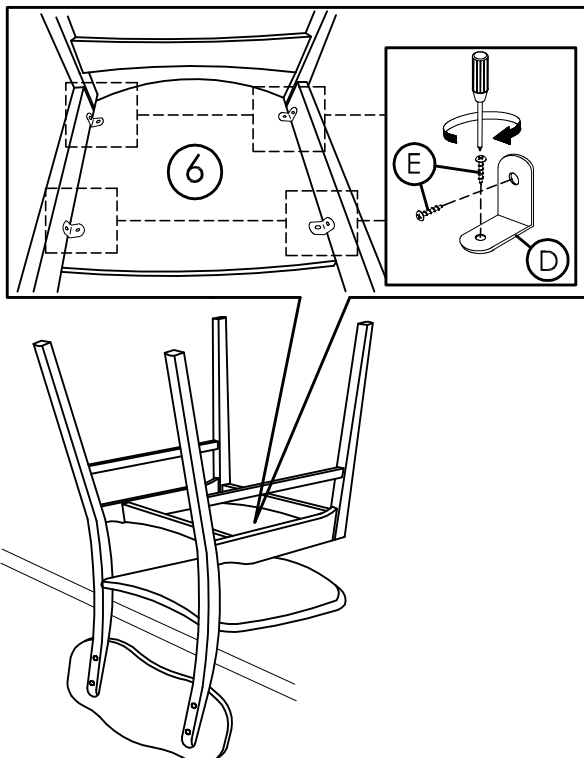
### STEP 2



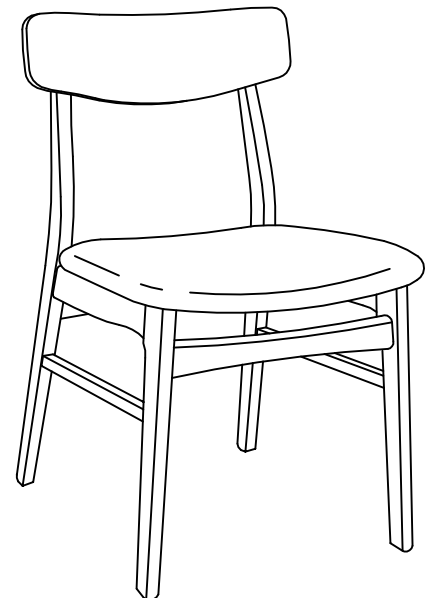
### STEP 3



### STEP 4



### STEP 5



COMPLETED  
CHAIR ASSEMBLY.